

C.R.N 148 FT/ 45 Meters

Total Refit YEAR 2007



This 148 C.R.N is unquestionably a yacht of exclusiveness and prestige, worthy of its reputation of this famous shipyard. With smooth and steady sailing, she will take you to view the wonders of the Mediterranean Sea and gather many memories to remember and cherish for the years to come. Let yourself be pampered by the professional crew on board, indulging in gourmet diners, in a formal dining area seating up to 14pax. She can accommodate up to 14 guests, in one Master, four double and two twin cabins (could be made double beds), with en-suite facilities. Every last detail has been seen through in order to provide outstanding service (crew of 8) and comfort to our exclusive clientele.

MAIN SALON



DINING



The chef will delight all your senses, even the most demanding requirements tailor made for you and your guests!

UPPER SALON

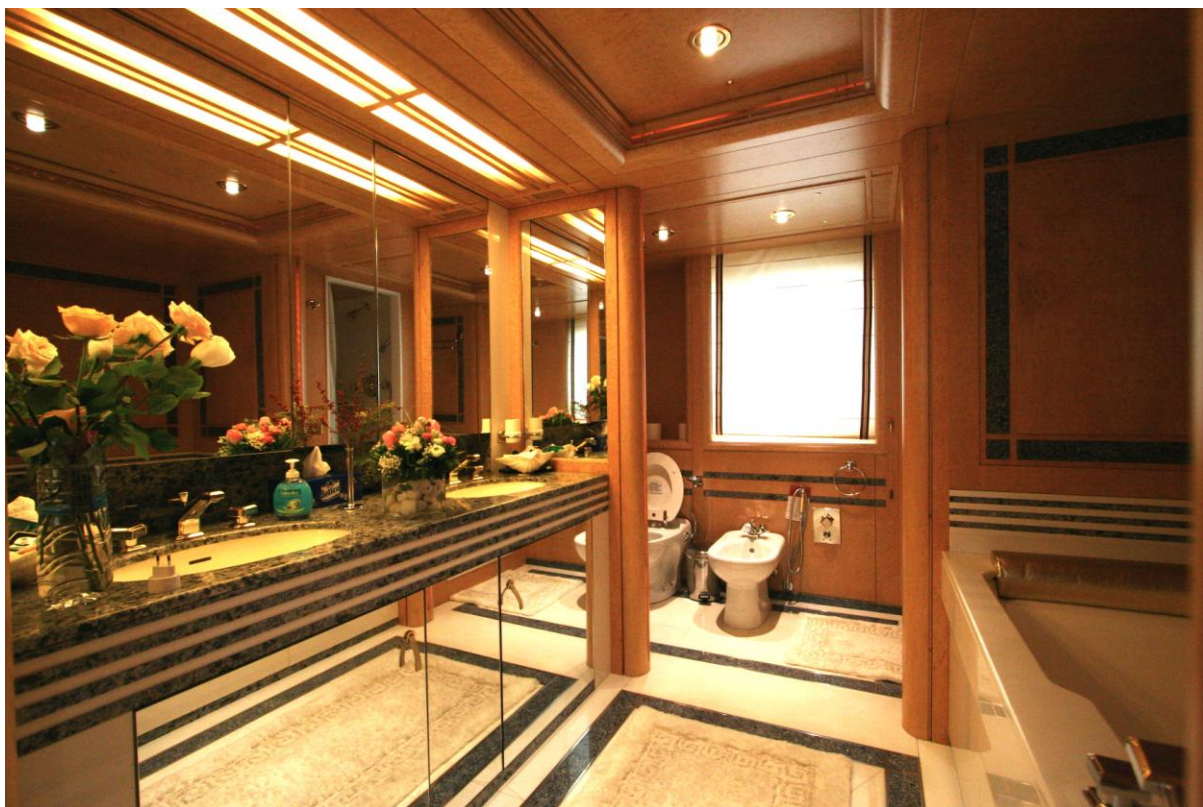


UPPER SALON (cont.)



The upper salon has ample space for the pleasure of entertaining guests. Organize fun table games, a strict poker match, watch your favorite DVD on the projection screen with home theater system, or just wind down for an evening drink with friends. The joyful pastel colors will absolutely brighten up your mood and this area is also a perfect place to enjoy the coolness of the air-conditioned interior, without sacrificing the outer seascape view, on account of the wide windows surrounding the salon.

MASTER CABIN



MASTER CABIN (cont.)



The full beam Master Cabin, located on the main deck, has a king sized bed, a sofa, a separate dressing area, ample amount of closet space and satellite TV/CD/DVD entertainment.

The Luxurious en-suite facilities of the Master Cabin has double sinks, bathtub and shower.

DOUBLE CABINS



SUN DECK



AFT DECK



The broad outer aft Mina deck area allows for shaded pleasure of morning breakfast, afternoon lunch or purely enjoying a light chat around the table, drifting away from everyday anxieties.

Nothing is left to chance when it comes to the satisfaction our guests.

AFT



AFT (cont.)



She has a large platform which unfolds to give you easy access to and from the sea. Make use of all the water toys, water skis, jet skis, tubes or just dive into the endless blue. Also she provides an advantage offered only by a few yachts worldwide: the elevator for the handicapped or for individuals with temporary disability, which will raise and lower one to and from the main deck with a push of a button.



SPECIFICATIONS



Year Built : 1987 / Total Refit 2007

Builder : C.R.N

Length : 45 meters (148ft)

Beam :8,50 meters (28ft)

Draft : 2,25 meters (7,4ft)

Engines : MTU 2x3400HP

Cruising Speed : 15 Knots -850 Ltr /hour

Maximum Cruising Speed : 20 Knots - 1400Ltr/hr

Fuel Capacity :67.000 Liters

Generators : 2x146 KVA Mercedes, 20 ltr/hr each one

Water Capacity : 23.800 Ltr

Water Maker : Sea Recovery 2 x 400ltr/hr

ACCOMODATIONS PAX 14

1 Master cabin

4 Double Cabins all with en-suite facilities

2 Double Cabins (with possibility of becoming double)*

All doted with en-suite facilities, TV/ Audio Entertainment

*(Depending on weight of guests)

COMMUNICATIONS

Satellite Communications, VSAT, Fleet 77(Phone, Fax, Mail)

SATCOM & Cellular Communications, GSM Phone,

High Speed Wi-Fi Internet – in all areas.

ENTERTAINMENT

Comprehensive audi visual Systems, Satellite TV (Nova, Hotbird)

Home theater system with projection screen, PS3, TV, CD & DVD player in all cabins.

WATER SPORTS & TENDERS

1 x Zodiac 6,60 meters with 115hp outboard

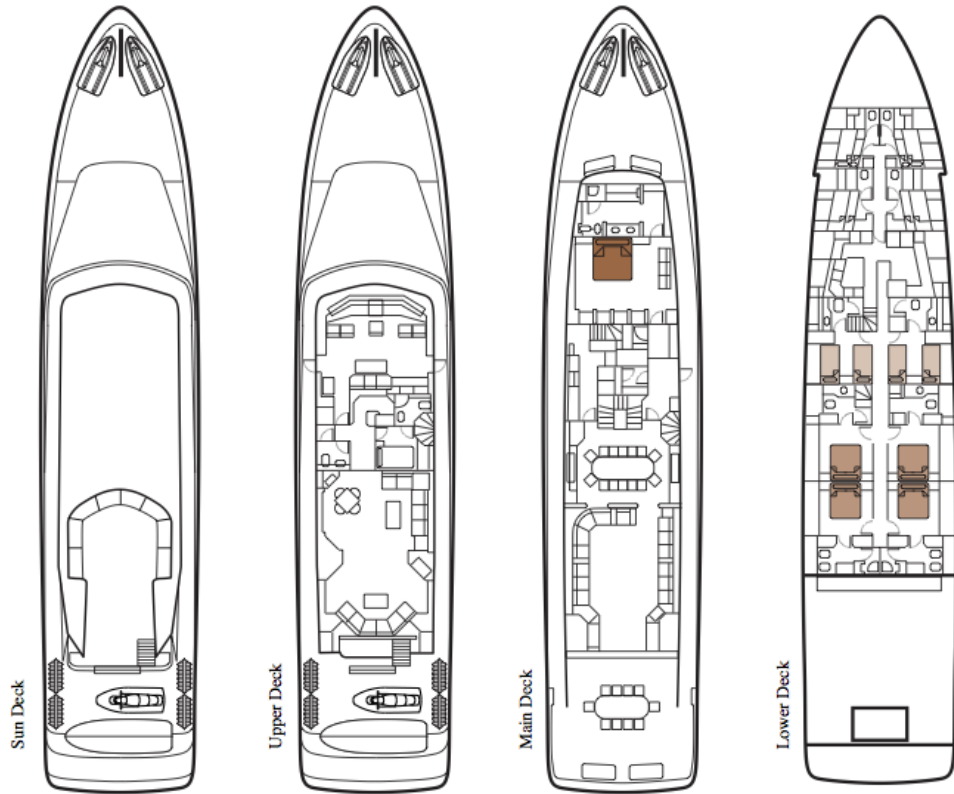
2 x 2 Persons 760cc Sea Doo Bombardier Jet Ski

1 x 2 Persons GP120cc YAMAHA Jet Ski

1 x 5 Persons Sea Wasp (Banana)

2 x 2 Persons Patriot Duo (tubes), Water Skis, Snorkelling Equipment, Fishing Equipment.

LAYOUT



Sun Deck

Upper Deck

Main Deck

Lower Deck

■ Master Cabin ■ Double Cabins ■ Twin Cabins